



When working hard is not enough...

Fishline

Provides for basic needs in extraordinary ways

ANNUAL IMPACT REPORT FY 2025



LETTER FROM THE EXECUTIVE DIRECTOR AND BOARD PRESIDENT

Dear Friends,

Thank you for your unwavering support of Fishline’s mission and vision. Your generosity has allowed us to navigate an extraordinarily demanding 2025—a year defined by complexity, resilience, and the continued strength of our community (please see page 6 for a more detailed year in review). As we prepare for the year ahead, we know the need for our services will increase.

The federal government shutdown in October created a ripple effect throughout our region, one that many local families are still experiencing today. Combined with skyrocketing healthcare costs, people across Kitsap County are being forced into heartbreaking choices—deciding between medical care and paying their utility bills or other essential expenses. These pressures reflect challenges no household should have to face.

At Fishline, we remain dedicated to serving every neighbor who turns to us with dignity, compassion, and grace. As we continue to meet urgent needs, we recognize the larger systemic issues—issues that require the collective insight and creativity of our entire community.

The most meaningful progress will come from working together. Long-term change will require innovative solutions shaped by many voices. We know that collaboration among nonprofits, government agencies, local businesses, civic partners, and engaged residents is essential to building a stronger Kitsap County. Fishline is engaged where these important discussions are happening. By participating in committees, cross-sector coalitions, and collaborative planning efforts, we can ensure that diverse perspectives guide the solutions we pursue. Together, we can move beyond temporary fixes and begin addressing the root causes that make families vulnerable in the first place.

Your support gives us the courage to imagine something better—and to pursue it alongside others who care just as deeply.

Thank you for standing with us, for showing up for your community, and for helping us turn shared challenges into shared opportunities. We look forward to continuing this work together in the year ahead.



Charlie Thompson

Charlie Thompson
Executive Director



Jagoda Perich-Anderson

Jagoda Perich-Anderson
Board President

STATE OF NEED IN OUR COMMUNITY

KITSAP COUNTY BY THE NUMBERS:**

34,000

individuals are experiencing food insecurity

52%

of those who are food insecure do not qualify for SNAP or EBT

\$27/hr

minimum full-time salary to afford a one bedroom apartment

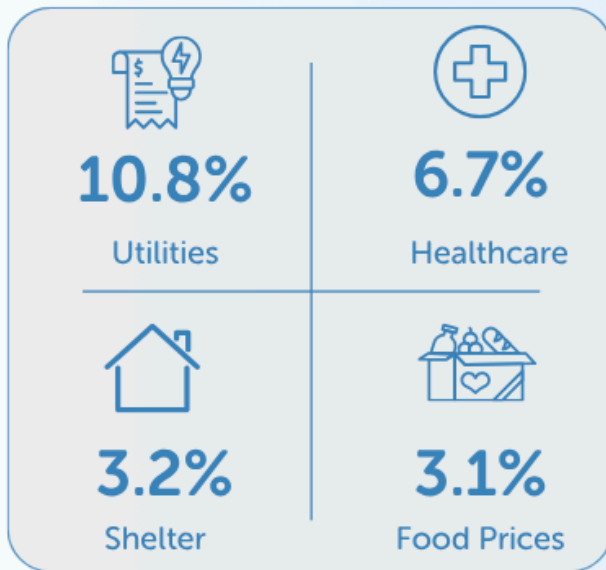
6%

cannot access services due to transportation barriers

"COSTS ARE UP ACROSS THE BOARD. GROCERIES ARE MORE EXPENSIVE. HOUSING IS MORE EXPENSIVE. CHILDCARE IS MORE EXPENSIVE. GAS PRICES ARE SOARING. WE DONT HAVE TO LIVE LIKE THIS."

REPRESENTATIVE EMILY RANDALL

2025 CPI* PRICE INCREASES



Meanwhile, Social Security's cost-of-living adjustment grew by only 2.8%.

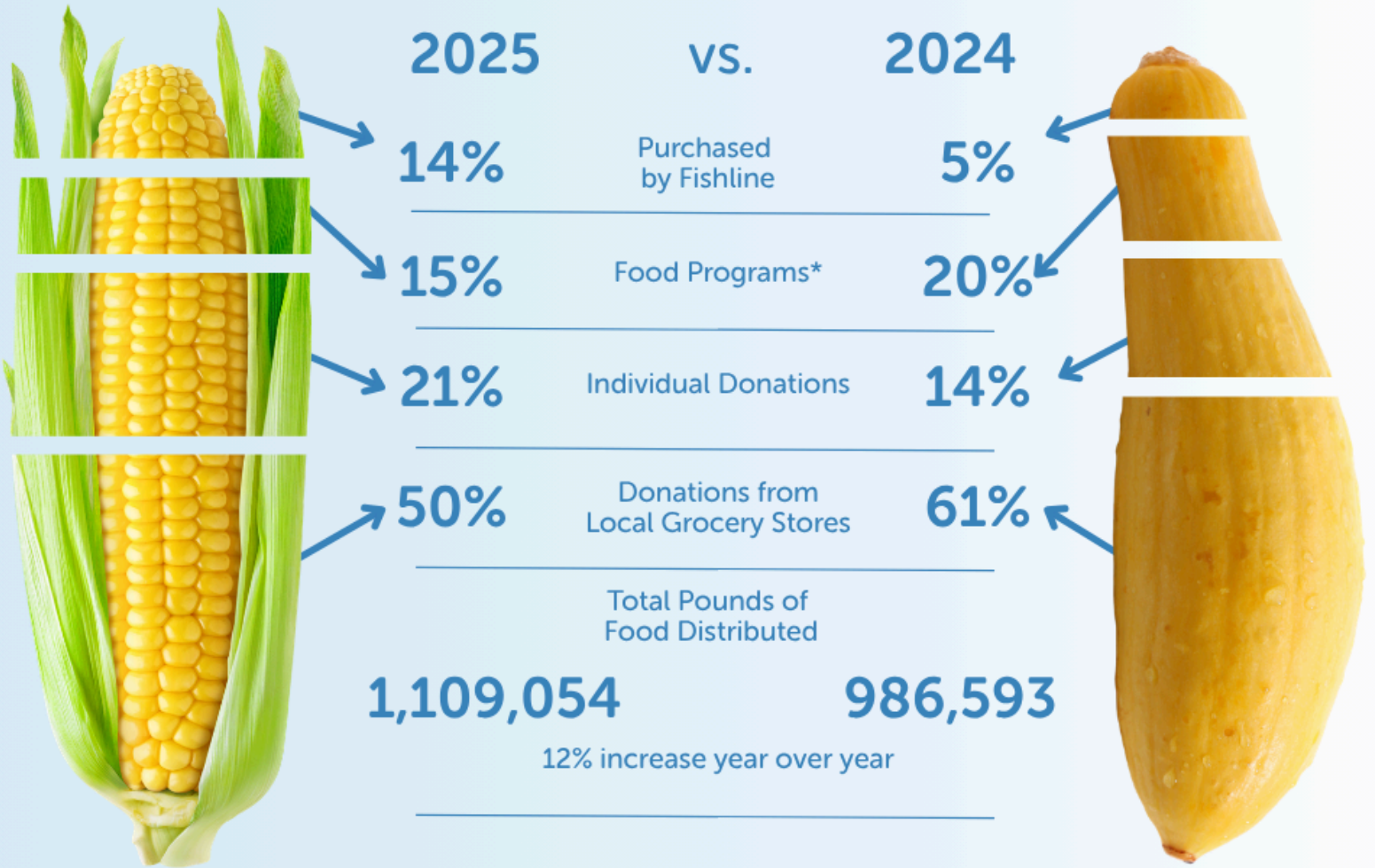
*Consumer Price Index







**Statistics are provided by Map the Meal Gap, Kitsap Economic Development Alliance 2023, Puget Sound Regional Council 2022, and Kitsap Community Resources Community Needs Assessment 2022.



2025 DISTRIBUTION

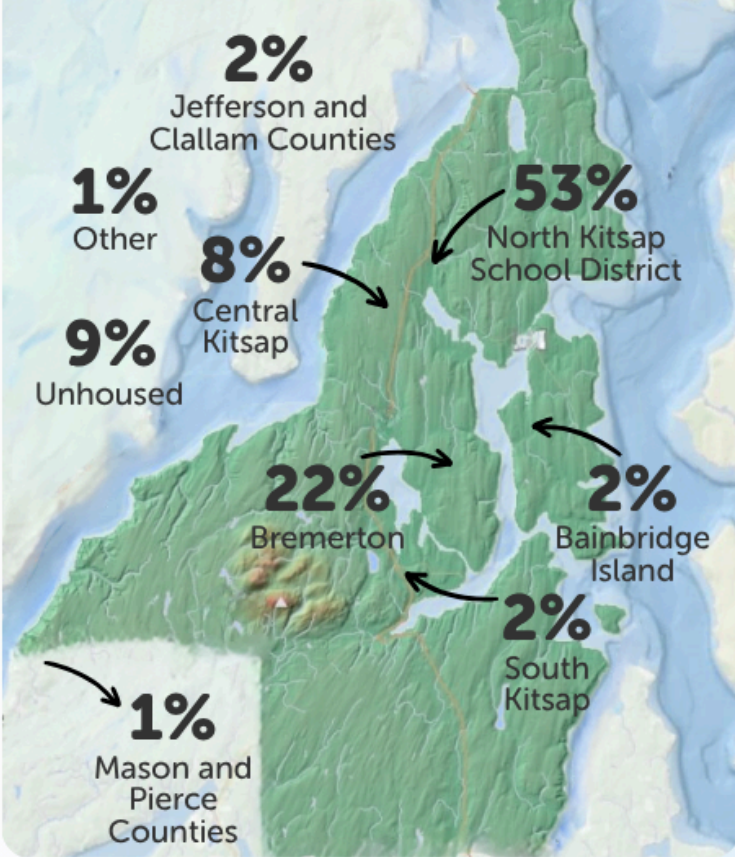
SOURCES OF FOOD DISTRIBUTED



 <p>1,066 Navigator Visits</p>	 <p>842 Showers Provided</p>	 <p>\$ 266,076 Financial support provided</p>
 <p>541 Children served through Birthday and Holiday Bucks program</p>	 <p>1,266 Mental Health Therapy Sessions Scheduled</p>	 <p>\$ 2,745,806 In Kind Goods Distributed</p>

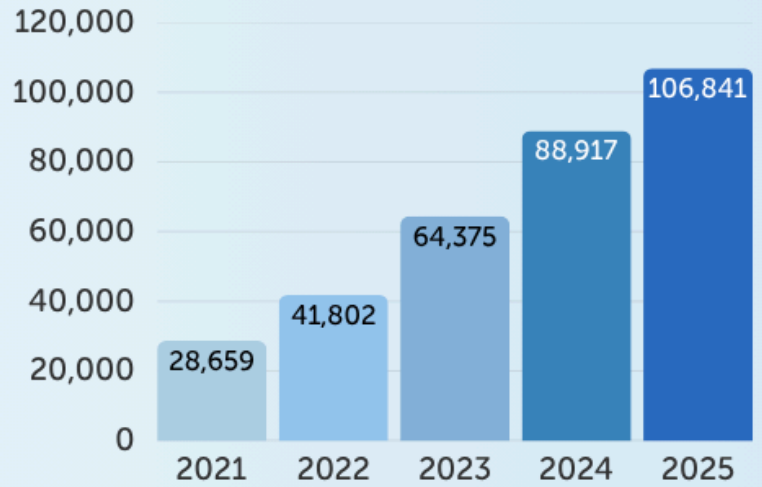
*TEFAP, Northwest Harvest and Food Lifeline

WHERE CLIENTS RESIDE



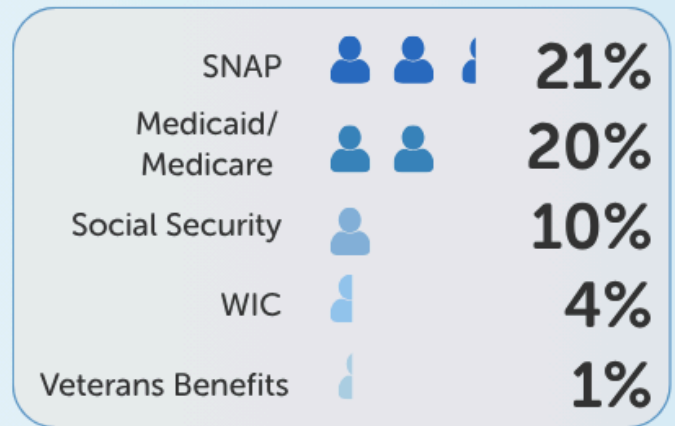
WHO WE SERVE*

INDIVIDUALS SERVED AT FISHLINE:

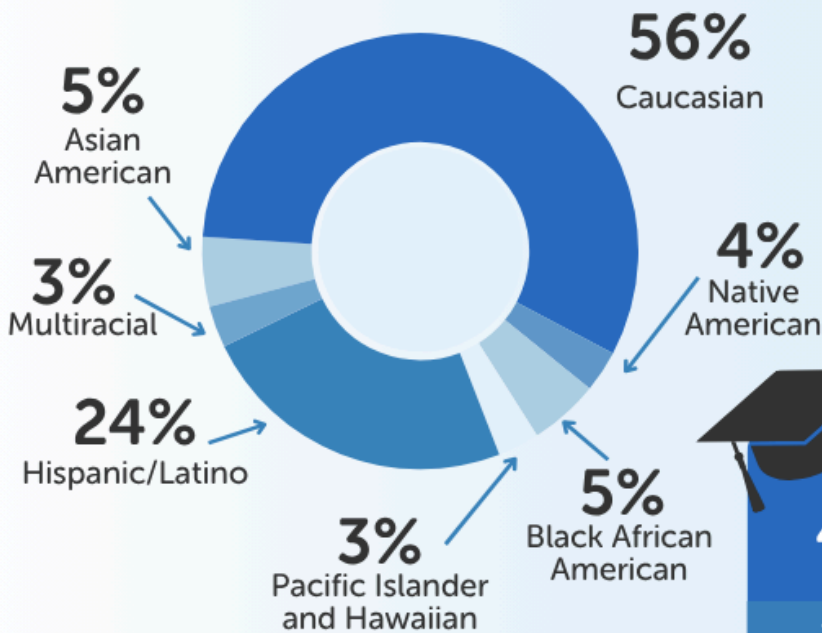


The need for our services has increased by 155% in three years.

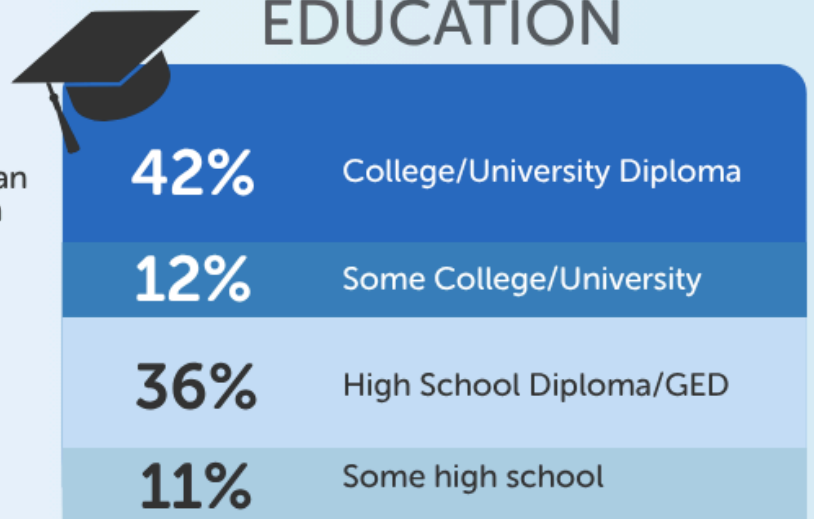
RECEIVES GOVERNMENT ASSISTANCE



RACE



EDUCATION



*Percentages reflect the data from individuals who opted to self-report.

YEAR IN REVIEW

As we reflect on the past year, we are proud of the progress, resilience, and innovation that shaped our work across Kitsap County. Thanks to our community, volunteers, and partners, we strengthened our services and expanded our reach during a year of both challenges and meaningful growth.

To expand access, we introduced **Saturday hours** — then the only weekend option offered by any food bank in Kitsap County. By the end of 2025, we served an average of **123 households a day**, a clear reflection of rising need and community trust.

We continued building our Mobile Food Market program. Despite production delays, we identified **six pilot locations** throughout Kitsap County. This will help us bring fresh, healthy food directly into underserved areas, increasing choice and equity.

The year brought unexpected challenges as well. During the federal government shutdown, we mobilized quickly—purchasing nearly **\$70,000 in groceries** within two months to ensure furloughed workers and those working without pay had the food they needed. We also created **Enhanced Navigator Services** to help affected households access emergency resources and remain stable during an uncertain time. This rapid response demonstrated our commitment to being a dependable safety net, especially when broader systems fall short.

We also strengthened our leadership footprint. Charlie Thompson joined the **Executive Committee of the Kitsap County Housing and Homelessness Coalition**, ensuring Fishline remains central in countywide discussions on stability and support.

Operational improvements allowed us to serve more efficiently. The **addition of a box truck** expanded our capacity to generate revenue and distribute clothing throughout our retail operations.

Sustainability remained a priority. With support from Puget Sound Energy, we **installed solar panels** that reduce long-term operating costs and strengthen our environmental stewardship—allowing more resources to go directly toward client services.

“WHETHER IT’S LINES WRAPPED AROUND THE BLOCK AT FOOD BANKS, PEOPLE EXPERIENCING HOMELESSNESS LIVING ON THE STREETS OR HAVING TO COMMUTE FROM TOO FAR AWAY FOR A JOB THAT DOES NOT COVER THE BILLS, PEOPLE ARE WORKING HARD, AND IT IS NOT ENOUGH.”

CHARLIE THOMPSON
KITSAP SUN, EDITORIAL



PARTNER NETWORKS

Our partner network is essential to the way we serve the community. Rather than duplicating services, we intentionally collaborate with organizations that are already experts in their fields. By leaning into their strengths—whether housing support, behavioral health, senior services, emergency response, or education—we ensure that every client receives the most effective help possible. These partnerships allow us to focus on what we do best while creating a seamless, coordinated web of support for the people of North Kitsap.



In 2025, **Olympic Community of Health, Kitsap Division of Aging and Long-Term Care, Tessera** and the **Washington State Department of Agriculture** all provided funding to support the purchase of our mobile food market. Together, these partnerships have strengthened our network and expanded our capacity to provide food and services to our community.



Forty three volunteer bakers from **Community Loaves** have donated 4,585 loaves of bread and 4,040 energy cookies to our free market. This dependable donation of fresh bread has helped us offer consistently wholesome options to the individuals and families we serve.



8

IN HOUSE
PARTNERS



36

GROCERY AND RETAIL
STORE PARTNERS

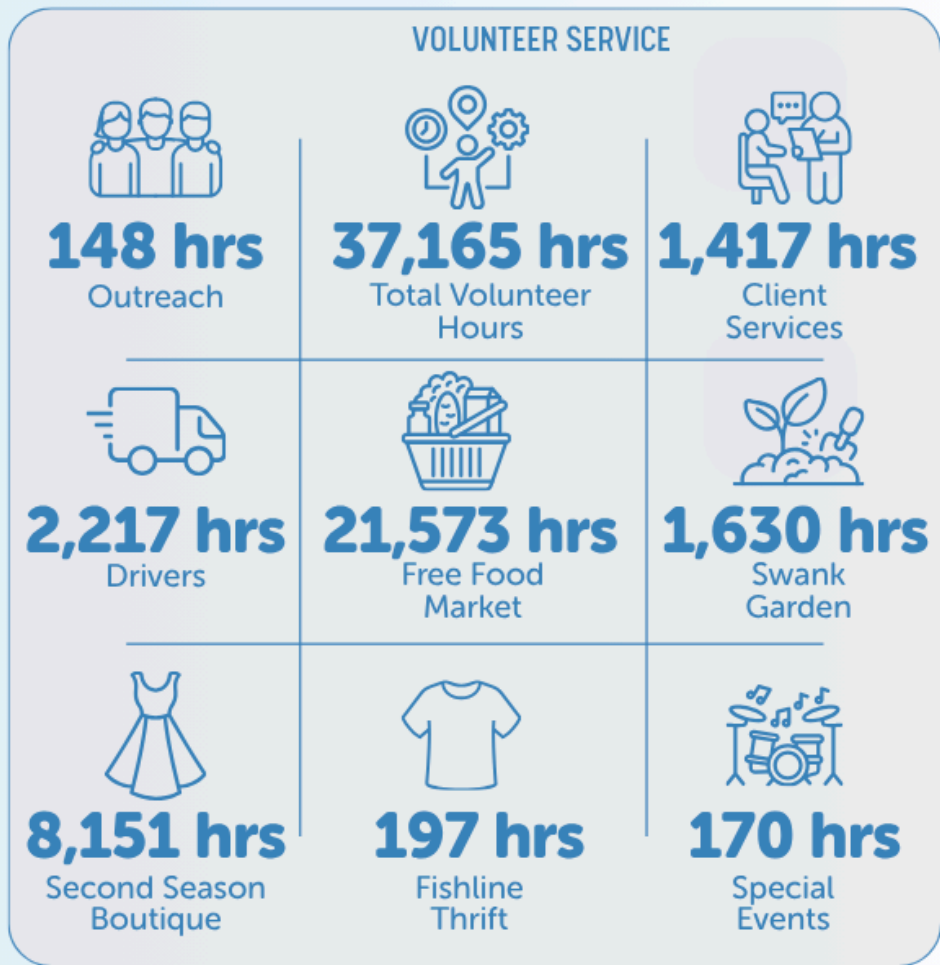


74

TOTAL PARTNER
ORGANIZATIONS

VOLUNTEERS

Volunteers are truly the heart of our organization. Their dedication and compassion fuel everything we do. Together, they contribute the equivalent of 18 full-time staff members—an extraordinary gift of time, talent, and heart that makes our mission possible every single day. Their presence strengthens our community with hope, dignity, and connection.



"I ALWAYS WANTED TO VOLUNTEER AT FISHLINE BUT COULD NEVER SEEM TO FIND THE TIME. SEVEN YEARS AGO, I FINALLY MADE IT A PRIORITY—AND I'M SO GRATEFUL I DID. I LOVE IT HERE. TALKING WITH THE STAFF, THE CLIENTS, AND THE OTHER VOLUNTEERS DEMONSTRATES WHAT TRUE COMMUNITY FEELS LIKE."

AMY,
FISHLINE VOLUNTEER

So much of this vital work happens behind the scenes. At Second Season, volunteers sort and price incoming donations for resale. At Swank Garden, our volunteers grew a remarkable 9,212 pounds of fresh produce in 2025 —food that nourished our community thanks entirely to the dedication of volunteers. Their passion, whether out front or quietly tending to the details, is what keeps Fishline thriving.



2025 MAJOR GIFT DONORS

1st Security Bank | Ruth and John Ackenhusen | Sally Adams and Louis Richard | Archarios Foundation | Bainbridge Community Foundation - Pay it Forward Fund | Ryan and Tara Bartlett | Bonnie Becke | Nicole & Resa Board | Jack & Barbara Bryce | Sandra Cazier | Chinook Contractors | Clovis Foundation | Larry Colello | Kylie & Chris Cromrich | Cunningham Endowed Family Fund | Virginia Davison | Cindy Demeules and Garth Jacobson | Dietze Charitable Foundation | Katherine MacDonell | Paul & Barbara Erb | Barbara Fay | Debra Garvey Genung & Bruce Genung | Shawn & Alison Gilfedder | Jerry Goodwin | Stephen & Kristi Growdon | Karl & Kelly Hadley | Carl Haefling | Rebecca and Michael Hall | Peggy Hammer & Donald Marshall | Mary Elise Haupt | Marjee E. Ibsen | Sonja & William Inglin | Daniel & Courtney Kent | Kitsap County Treasurer Employees | Kitsap Credit Union | Kitsap Sun Bellringers | Keith Kriebel and Linda Wells | Emily Kuo | Michael Lindsey | Steven MacKay & Anna Muelling | Michael & Jeanne Maier | Ellen Kay Marsh | Elizabeth L. Martin | Molly McGowen | David and Jenni McGrane | Ann Morgan | Doug & Audrey Newell | Jim Anderson and Jagoda Perich-Anderson | Dale and Carol Perry | Deane and Jeffrey Pfeil | Port Madison Enterprises | Precision Maintenance | Puget Sound Energy Foundation | Steven & Rochelle Rabago | Thomas Ringo | Schoenberg Family Law Group | Kathleen Schubert | Seattle Foundation- Lucille H. Truman Fund | Scott Shand and Amy Constant | Loretta Sluys | Margaret & Neil Storey | Stephen and Lana Swann | Susan & Tandy Trower | Bev & David Veterane | Virginia Mason Franciscan Health | Clarice Vosgien | Susan Watts | Carl R. Westphal | Rosemary & Ross Wheeler | Keith and Mary Kay Willis | Windermere Foundation |



SPONSORSHIPS

Delta Dental | Evergreen Home Loans | Haselwood Auto Group
Molina Healthcare | Nordic Hill Manor | Puget Sound Energy
Tiedeman Construction | Valley Nursery | Ward Media

"THIS WAS MY FAMILY'S FIRST YEAR CONNECTING WITH FISHLINE VIA THE RECREATION FOR ALL PROGRAM, AND WE LOVED IT! WE WANTED TO GIVE BACK TO HELP OTHERS IN OUR COMMUNITY BE ABLE TO FIND THE CRITICAL RESOURCES THEY NEED OR THE FUN OPPORTUNITIES THEY WANT TO TRY AS WELL."

TL AND JANE,
FISHLINE DONORS

LOOKING AHEAD TO 2026

As we look ahead to 2026, we are excited to share several developments that will strengthen Fishline's ability to serve our community.

We are pleased to announce that **Second Season will move to a larger space in Poulsbo Village.** The new location will improve our thrift operations, increase revenue to support our programs, and create a more welcoming experience for customers, donors, and volunteers. We see an opportunity to create stronger cohesion between Fishline and our retail store. To help build that connection, we will be rebranding Second Season with a new name—one that clearly aligns with Fishline and is memorable for our customers.

At our Viking Avenue campus, we are preparing for important upgrades. When our current building was constructed, we could not have imagined how much Fishline would grow in a decade. Today, our market is at full capacity, and neighbors often wait outside before entering. To improve comfort and safety—especially in cold, wet weather—we will be **installing a canopy** along the side of the building to provide dry, sheltered waiting space.

We are also exploring ways to make our market more accessible, including a **feasibility study** to evaluate potential expansions and improvements.

This year, we will also send our **Mobile Food Market** out to locations which will bring nutritious food directly to communities where transportation is a challenge. This initiative will help us reach neighbors who cannot easily travel to our main campus and ensure that everyone has access to healthy options.

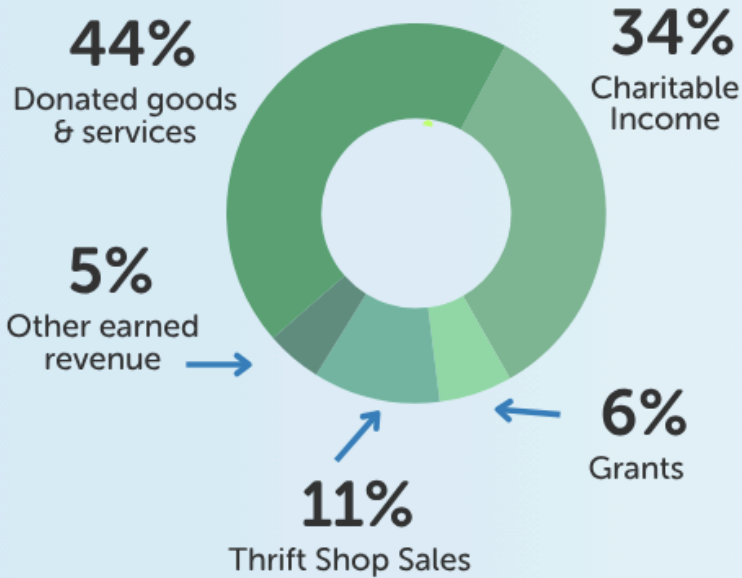
We are exploring how the annex can meet **additional community needs**, such as a more welcoming environment for our unhoused neighbors, adding much needed office space, and improving service flow across our campus.

Beyond our facilities, Fishline remains committed to **addressing broader community challenges.** We are focused on supporting solutions to the affordability crisis in Kitsap County and in the coming year we will meet with multiple coalitions and community partners to determine how Fishline can contribute and how best to use available funds to support long-term stability for our neighbors.

2026 will be a year of meaningful progress, and we are grateful for your continued support as we work to expand our impact and serve every neighbor with dignity and compassion.

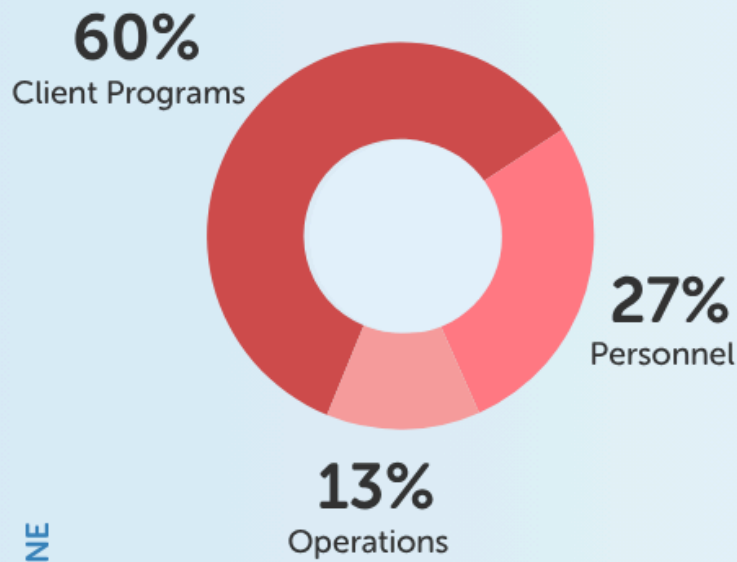


REVENUE & EXPENSES*



REVENUE SOURCES

Charitable Income	\$ 2,117,677
Grants**	\$ 388,768
Thrift Shop Sales	\$ 674,228
Other Earned Revenue	\$ 296,022
Donated goods and services	\$ 2,751,090



OPERATING EXPENSES

Personnel	\$ 1,641,672
Operations	\$ 766,327
Client Programs***	\$ 3,545,173

TOTALS

Total Revenue	\$ 6,277,787
Total Expenses	\$ 5,866,415
Total Net Income	\$ 335,100

2025 GRANTS

- Emergency Food Assistance Program
- Kitsap Bank
- Kitsap County Mental Health Treatment Court Chemical Dependency Program
- Kitsap Division of Aging and Long-Term Care
- Multicare
- Olympic Community of Health
- Puget Sound Energy Foundation
- Rayonier
- The Emergency Food Assistance Program
- Virginia Mason Franciscan Health
- Washington State Department of Agriculture

*Unaudited Financials **Several grants received were not awarded until 2026.

***Client Programs: Includes monetary and in-kind expenses.

FISHLINE BOARD OF DIRECTORS

Jagoda Perich-Anderson

Board President

Linda Potter

Vice President

Ryan Bartlett

Treasurer

Suzanne Keel-Eckman

Secretary

Heather Torres

Past President

Paul Dickinson

Board Member

Miranda Fort

Board Member

Tiffany Ligon

Board Member

Megan Mills

Board Member

Mark Owen

Board Member

Andrew Padula

Board Member

Nate Walters

Board Member

Frank Wilson

Board Member

STAFF LEADERSHIP

Charlie Thompson Executive Director

Adrienne Briggs Programs and Services Director

Christina Curtis Retail Operations Director

Amanda Dragon Development and Communications Director

Alex Sowby-Kidder Operations Director



Platinum
Transparency
2026

Candid.

Fishline is a 501c(3) nonprofit that provides for basic needs in extraordinary ways. We envision a vibrant Kitsap County where all neighbors have access to essential resources and the opportunity to thrive.



DONATE NOW

Tax ID# 91-1244431

WWW.FISHLINEHELPS.ORG

To protect the confidentiality of clients we serve, stock images are used throughout this report.